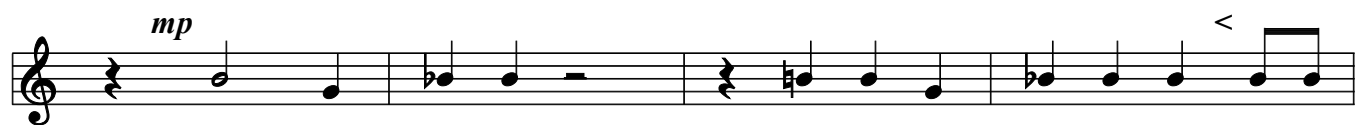


Pater noster

Petr Eben



Pa - ter nos - ter, qui es in coe - lis: San - cti - fi-



- cé - tur no - men tu - um: no - men tu - um;



Ad - ve - niat reg - num tu - um Ad - ve - niat reg - num



tu - um, Fi - at vo - lun - tas tu - a, Fi - at vo - lun - tas



tu - a, si - cut in coe - lo et in ter - ra



Pa - nem no - strum quo - di - ti - a - num,



da no - bis ho - di - e: Et di - mi - te no - bis



de - bi - ta nos - tra, si - cut - et nos di - mit - ti - mus de - bi - to - ri - bus



nos - tris Et ne nos in - du - cas in ten - ta - ti - o - nem,

f

sed - li - be - ra nos a ma - lo,

Detailed description: This is the first musical staff. It begins with a treble clef and a key signature of one flat (B-flat). The first measure contains a quarter rest followed by a quarter note G4, an eighth note F4, and an eighth note G4. The second measure has a quarter note E4 with a sharp sign (#). The third measure is a whole rest. The fourth measure has a quarter note G4. The fifth measure has an eighth note F4 and an eighth note G4. The sixth measure is a whole rest. The staff ends with a double bar line.

ff

sed - li - be - ra

Detailed description: This is the second musical staff. It starts with a treble clef and a 3/2 time signature. The first two measures are whole rests. The third measure has a 2/2 time signature and a whole note G4. The fourth measure has a 3/2 time signature and a whole note G4. The fifth measure has a 3/2 time signature and a whole note G4. The sixth measure has a 3/2 time signature and a whole note G4. The staff ends with a double bar line.

nos a ma - lo. A - men!

Detailed description: This is the third musical staff. It starts with a treble clef and a 3/2 time signature. The first measure has a whole note G4. The second measure has a whole note G4. The third measure has a whole note G4 with a slur above it. The fourth measure has a whole note G4 with a slur above it. The fifth measure has a whole note G4. The staff ends with a double bar line.